



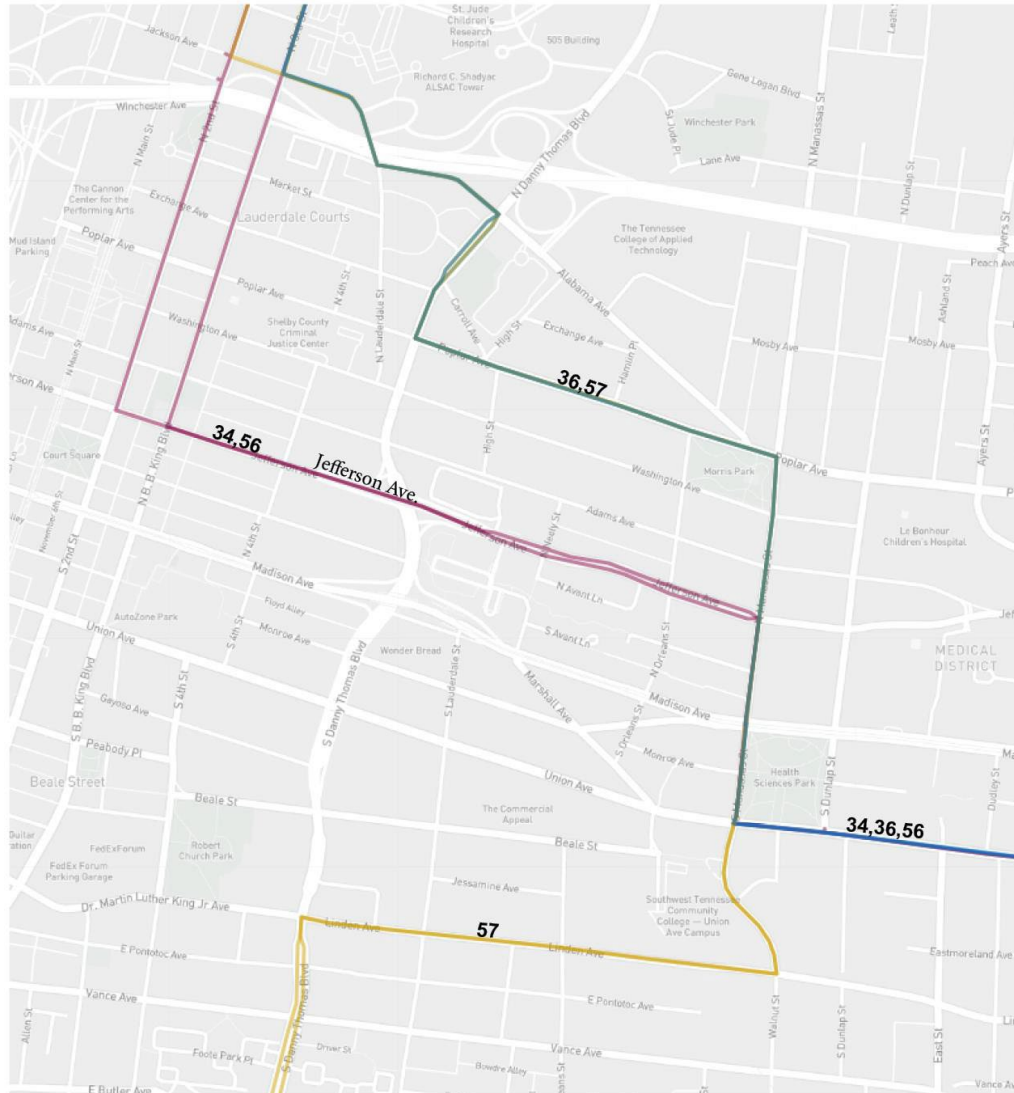
MATA Detours for 2023 St. Jude Memphis Marathon

Saturday, December 2, 2023 at 7:00 AM to 3:00 PM

2023 St. Jude Pre-Marathon Course Map

Effective:

Saturday, December 2, 2023 at
7:00 AM to 3:00 PM



Route 36 Outbound

South on Danny Thomas
Left on Poplar
Right on Manassas
Left on Union
Continue regular route

Route 36 Inbound

West on Union
Right on Manassas
Left on Poplar
Right on Danny Thomas
Continue regular route

Routes 34 and 56 Outbound

South on Second
Left on Jefferson
Right on Manassas
Left on Union
Continue regular route

Routes 34 and 56 Inbound

West on Union
Right on Manassas
Left on Jefferson
Right on B.B. King
Continue regular route

Route 57 Outbound

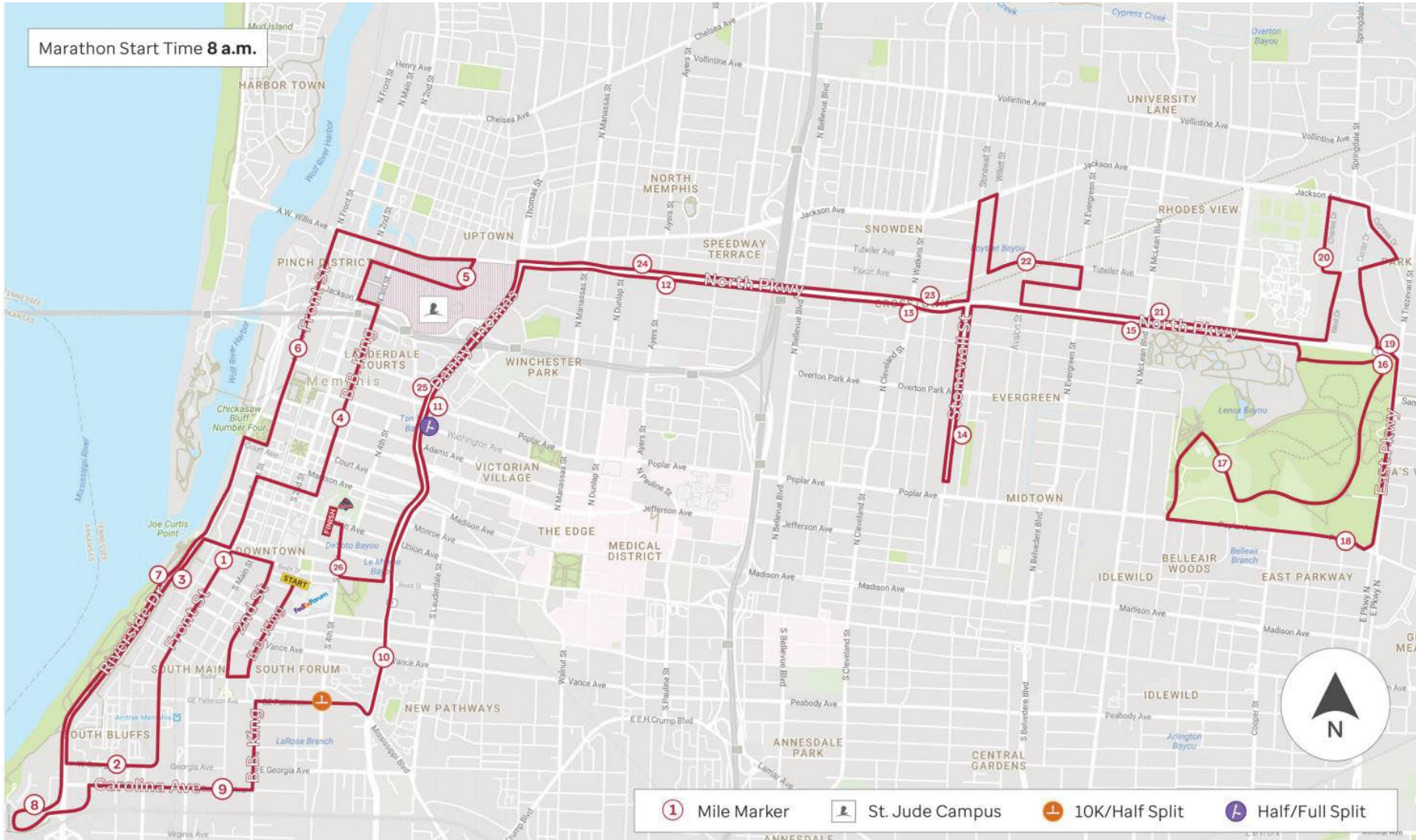
South on Danny Thomas
Left on Poplar
Right on Manassas which becomes Walnut
Right on MLK
Left on Danny Thomas
Continue regular route

Route 57 Inbound

North on Danny Thomas
Right on MLK
Left on Walnut which becomes Manassas
Left on Poplar
Right on Danny Thomas
Continue regular route

2023 St. Jude Marathon Course Map

Effective:
Saturday, December 2, 2023 at 7:00 AM to 3:00 PM



St. Jude Marathon Detour

Lamar/Jackson Shuttle



Effective:

Saturday, December 2, 2023 at 7:00 A M to 3:00 P M

Directions:

Start at Harbert and Bellevue
 Right on Bellevue
 Right on Lamar which becomes Crump
 Right on Pauline
 Right on Poplar
 Left on Bellevue
 Right on Vollintine
 Right on Watkins
 Right on Jackson
 Left on Bellevue
 Right on Poplar
 Left on Pauline
 Left on Crump
 Left on Harbert

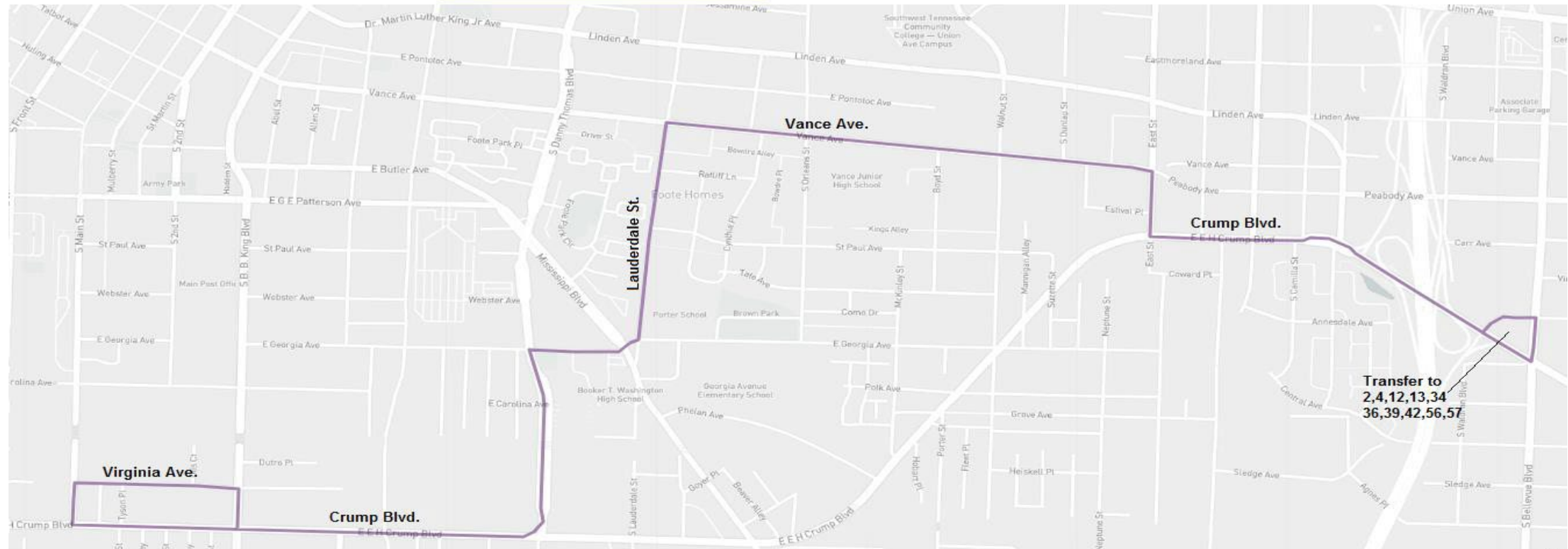
Lamar/Jackson Shuttle Bus will pick up Lamar and Bellevue and Watkins and Jackson

Connecting routes:

2,4,12,13,19,34,36,39,42,50,52,53,56,57

St. Jude Marathon Detour

Downtown Shuttle



Effective: Saturday, December 2, 2023 at 7:00 AM to 3:00 PM

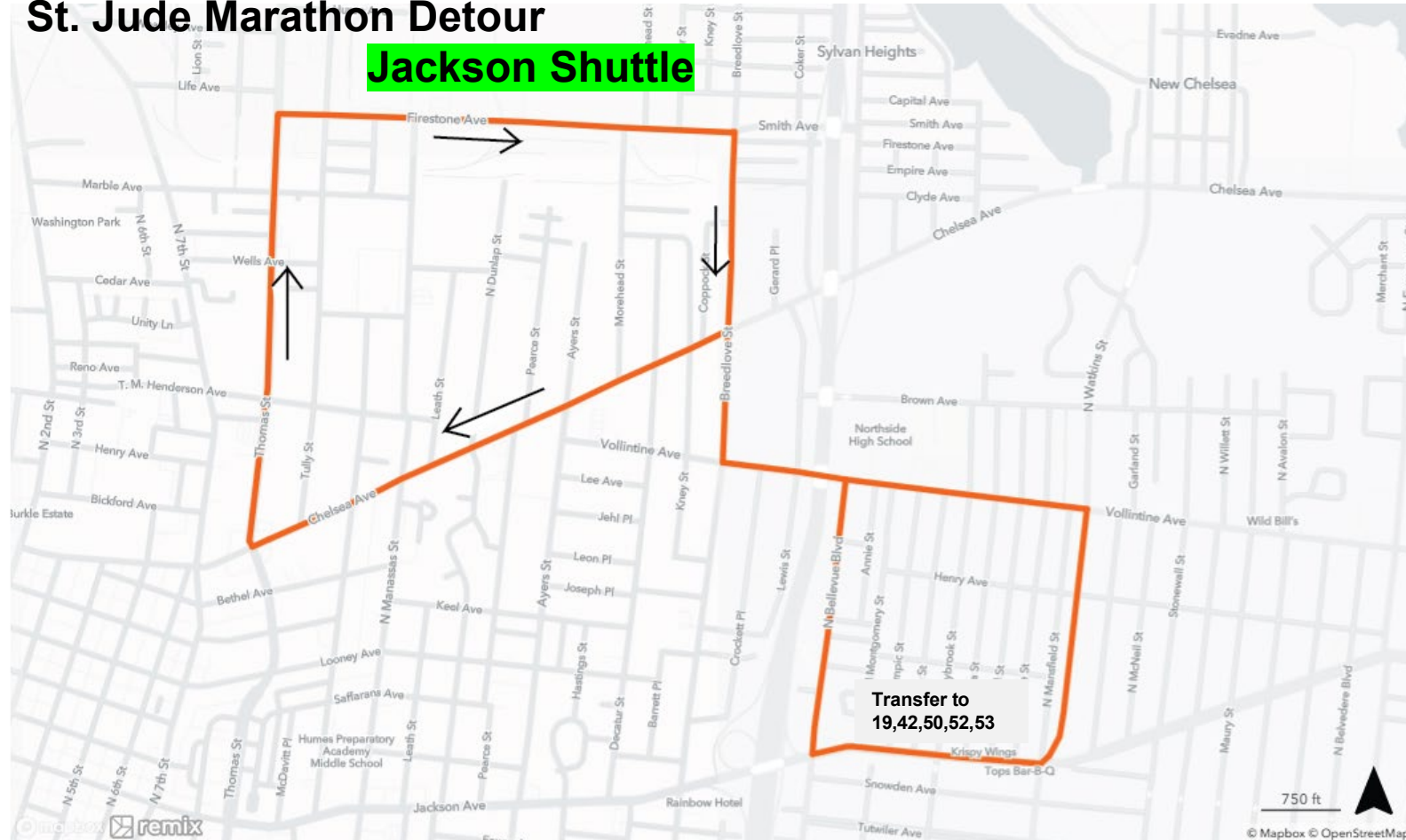
Directions: Start at Harbert and Bellevue, Right on Bellevue, Right on Lamar which becomes Crump, Right on East, Left on Vance, Left on Lauderdale, Right on Georgia, Left on Danny Thomas, Right on Crump, Right on Main, Right on Virginia, Right on B.B. King, Left on Crump, Left on Danny Thomas, Right on Georgia, Left on Lauderdale, Right on Vance, Right on East, Left on Crump, Left on Harbert

Downtown Shuttle Bus will pick up at Lamar and Bellevue

Connecting routes: 2,4,12,13,34,36,39,42,56,57

St. Jude Marathon Detour

Jackson Shuttle



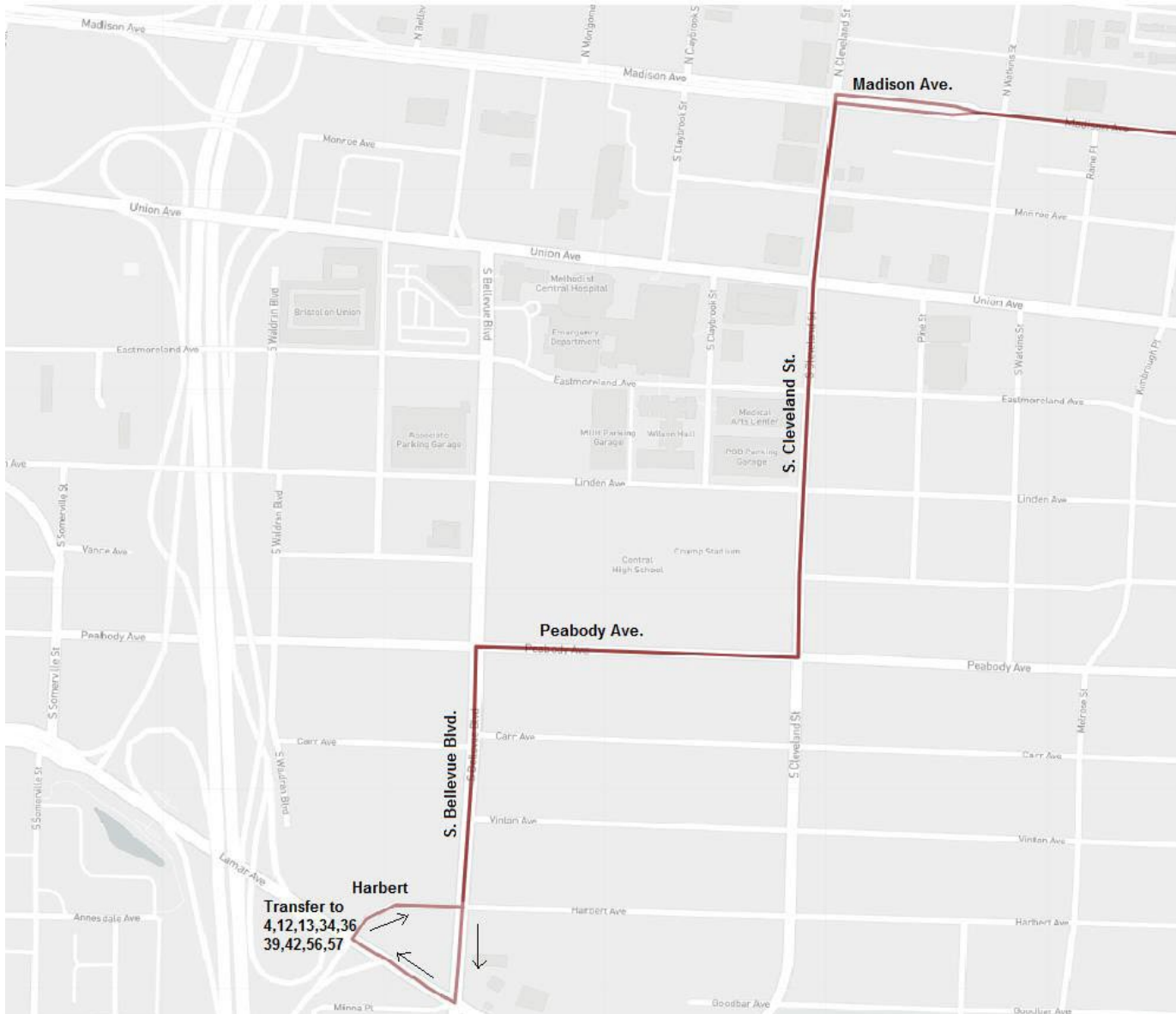
Effective: Saturday, December 2, 2023 at 7:00 AM to 3:00 PM

Directions: Start at Chelsea at Danny Thomas, Right on Firestone, Right on Breedlove, Left on Vollintine, Right on Watkins, Right on Jackson, Right on Bellevue, Left on Vollintine, Right on Breedlove, Left on Chelsea, End at Chelsea at Danny Thomas

Jackson Shuttle bus will pick up at Third and Mill and Watkins and Jackson Connecting routes: 8,11,19,40,42,50,52,53

St. Jude Marathon Detour

Route 2 Detour



Effective: Saturday,
December 2, 2023 at 7:00 AM
to 3:00 PM

Directions:

Route 2 Outbound

Start at Harbert and Bellevue
Left on Bellevue
Right on Peabody
Left on Cleveland
Right on Madison
Continue regular route

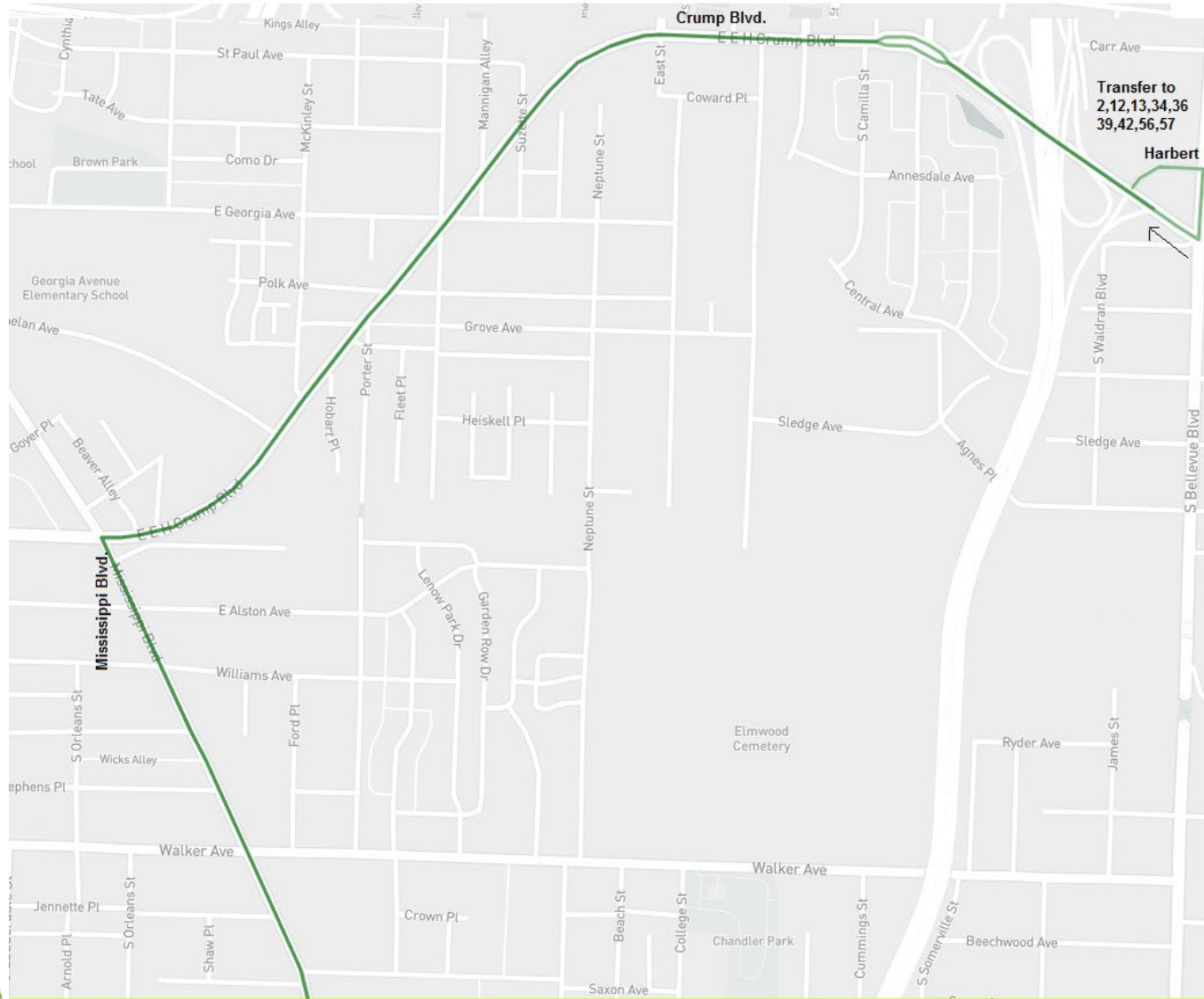
Route 2 Inbound

Head west on Madison
Left on Cleveland
Right on Peabody
Left on Bellevue
Right on Lamar
Right on Harbert

Connecting routes:
4,12,13,34,36,39,42,56,57

St. Jude Marathon Detour

Route 4 Detour



Effective: Saturday, December 2, 2023
at 7:00 AM to 3:00 PM

Directions:

Route 4 Outbound

Start at Harbert and Bellevue
Right on Bellevue
Right on Lamar which becomes Crump
Left on Mississippi
Continue regular route

Route 4 Inbound

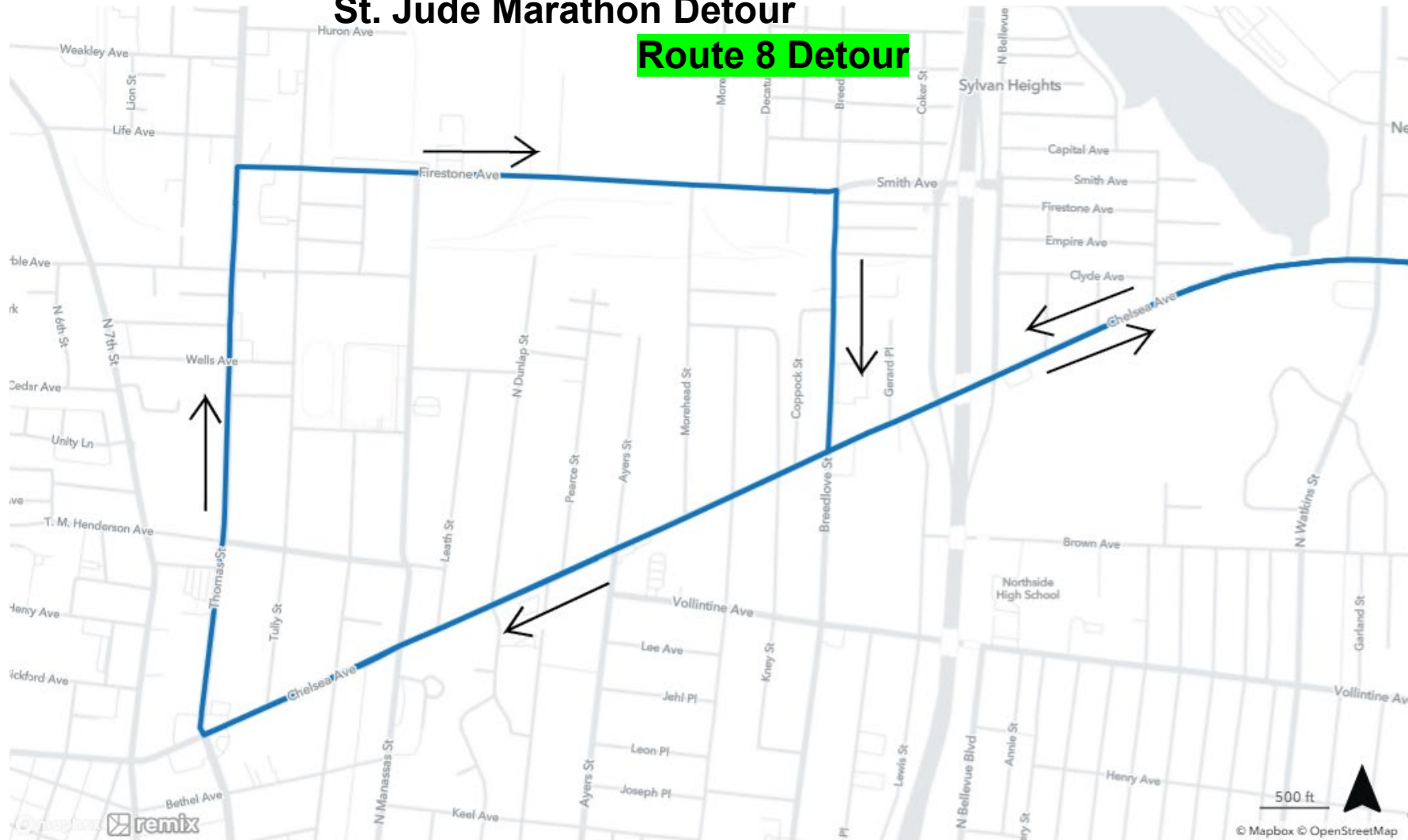
Head north on Mississippi
Right on Crump which becomes Lamar
Left on Harbert

Connecting routes:

2,12,13,34,36,39,42,56,57

St. Jude Marathon Detour

Route 8 Detour



Effective: Saturday, December 2, 2023 at 7:00 AM to 3:00 PM

Directions:

Route 8 Outbound

Start at Chelsea at Danny Thomas, Right on Firestone, Right on Breedlove, Left on Chelsea
Continue regular route

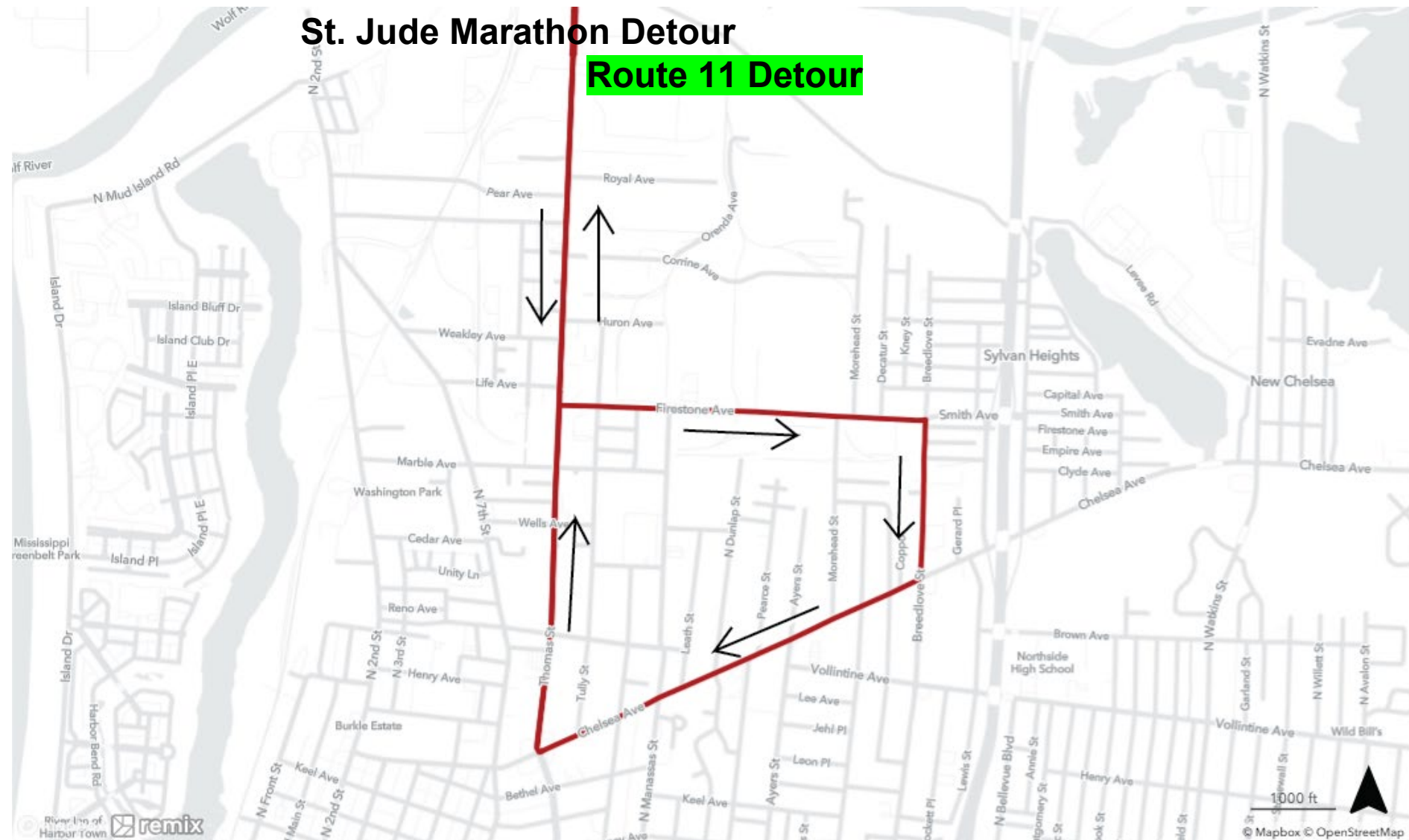
Route 8 Inbound

On Regular route but the end point is Chelsea at Danny Thomas.

Connecting routes: 11 and 40

St. Jude Marathon Detour

St. Jude Marathon Detour



Effective: Saturday, December 2,
2023 at 7:00 AM to 3:00 PM

Directions:

Route 11 Outbound

Start at Chelsea at Danny Thomas
Continue regular route

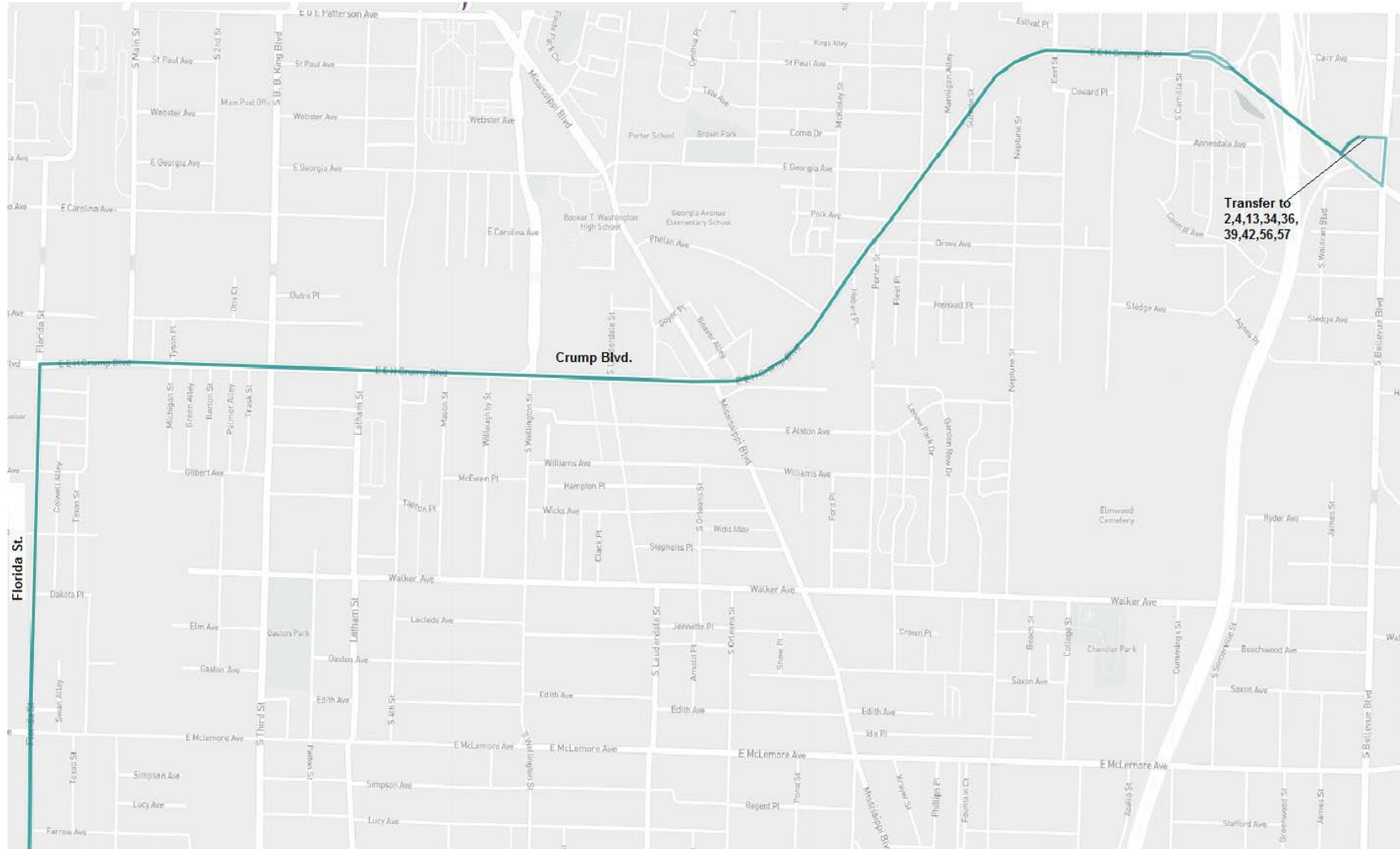
Route 11 Inbound

Left on Firestone, Right
on Breedlove, Right on
Chelsea, end at
Chelsea at Danny
Thomas

Connecting routes: 8 and 40

St. Jude Marathon Detour

Route 12 Detour



Effective: Saturday, December 2, 2023
at 7:00 AM to 3:00 PM

Directions:

Route 12 Outbound

Start at Harbert and Bellevue
Right on Bellevue
Right on Lamar which becomes Crump
Left on Florida
Continue regular route

Route 12 Inbound

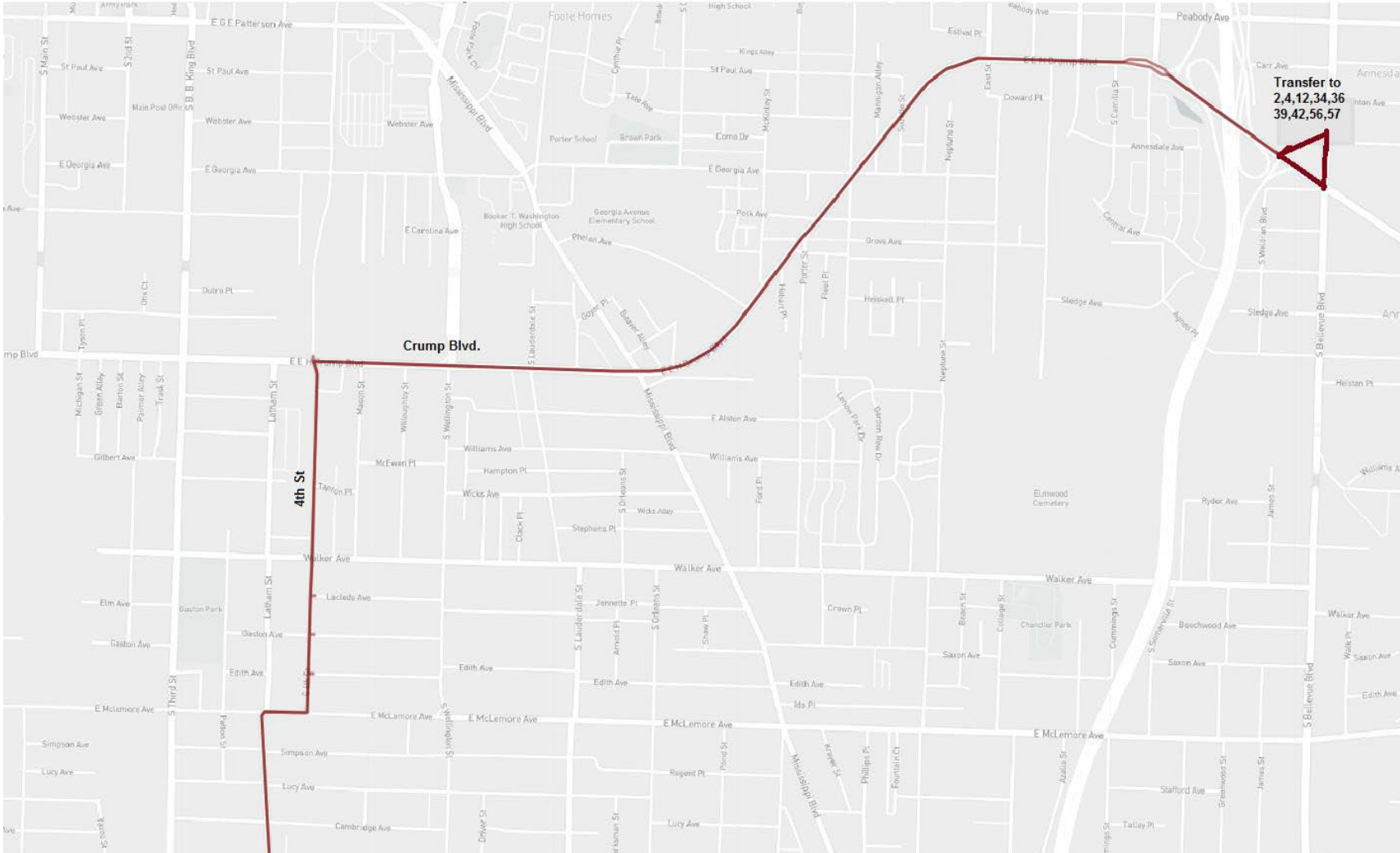
Head north on Florida
Right on Crump which becomes Lamar
Left on Harbert

Connecting routes:

2,4,13,34,36,39,42,56,57

St. Jude Marathon Detour

Route 13 Detour



Effective: Saturday, December 2, 2023
at 7:00 AM to 3:00 PM

Directions:

Route 13 Outbound

Start at Harbert and Bellevue
Right on Bellevue
Right on Lamar which becomes Crump
Left on Fourth
Continue regular route

Route 13 Inbound

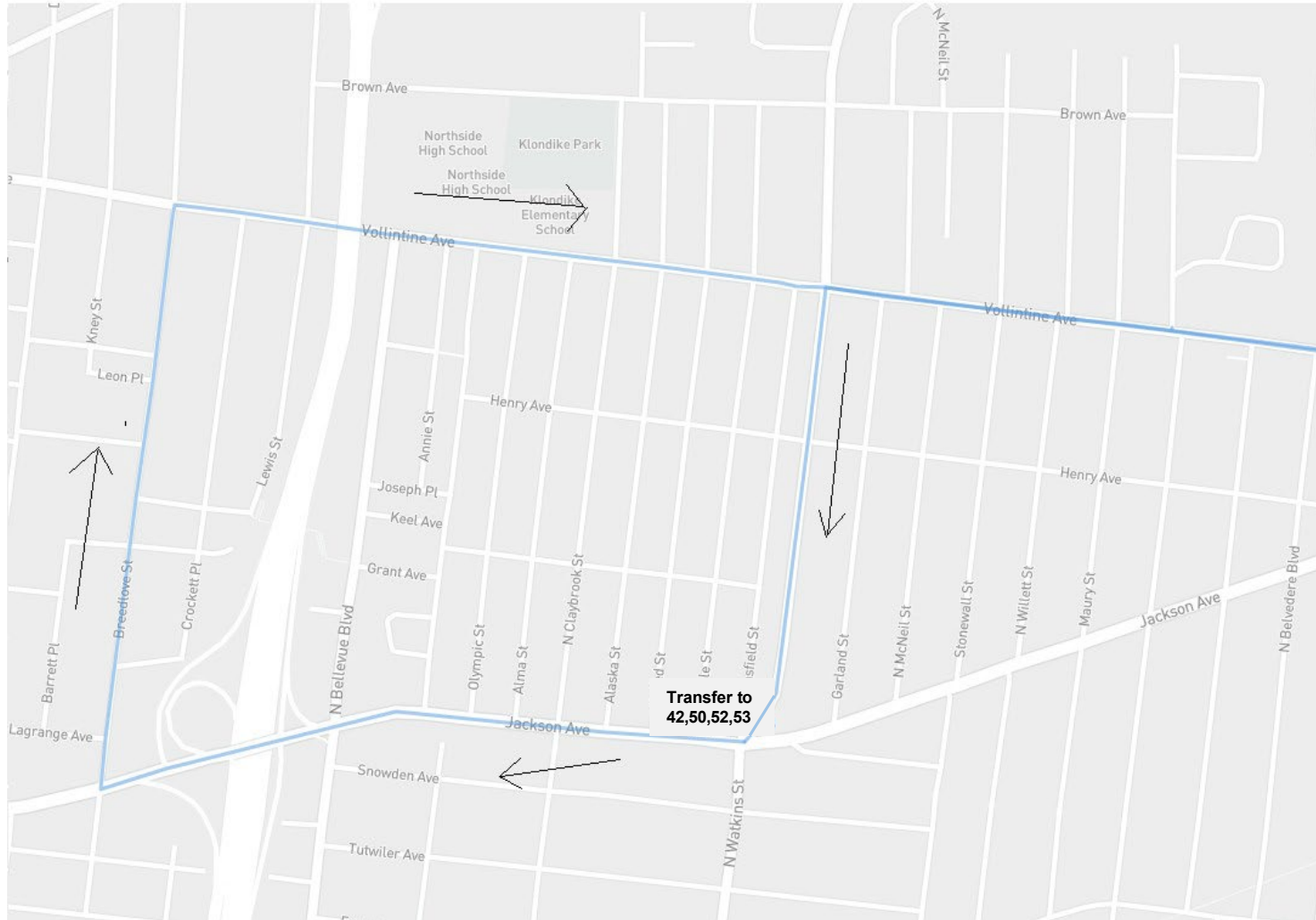
Head north on Fourth
Right on Crump which becomes Lamar
Left on Harbert, Change to Line 40,
Right on Bellevue, Right on Lamar,
Right I-240 North, Exit Chelsea, Left on
Chelsea, right on Thomas .

Connecting routes:

2,4,12,34,36,39,42,56,57

St. Jude Marathon Detour

Route 19 Detour



Effective: Saturday, December 2, 2023 at
7:00 AM to 3:00 PM

Directions:

Route 19 Outbound

Start at Watkins and Jackson
Right on Jackson
Right on Breedlove
Continue regular route

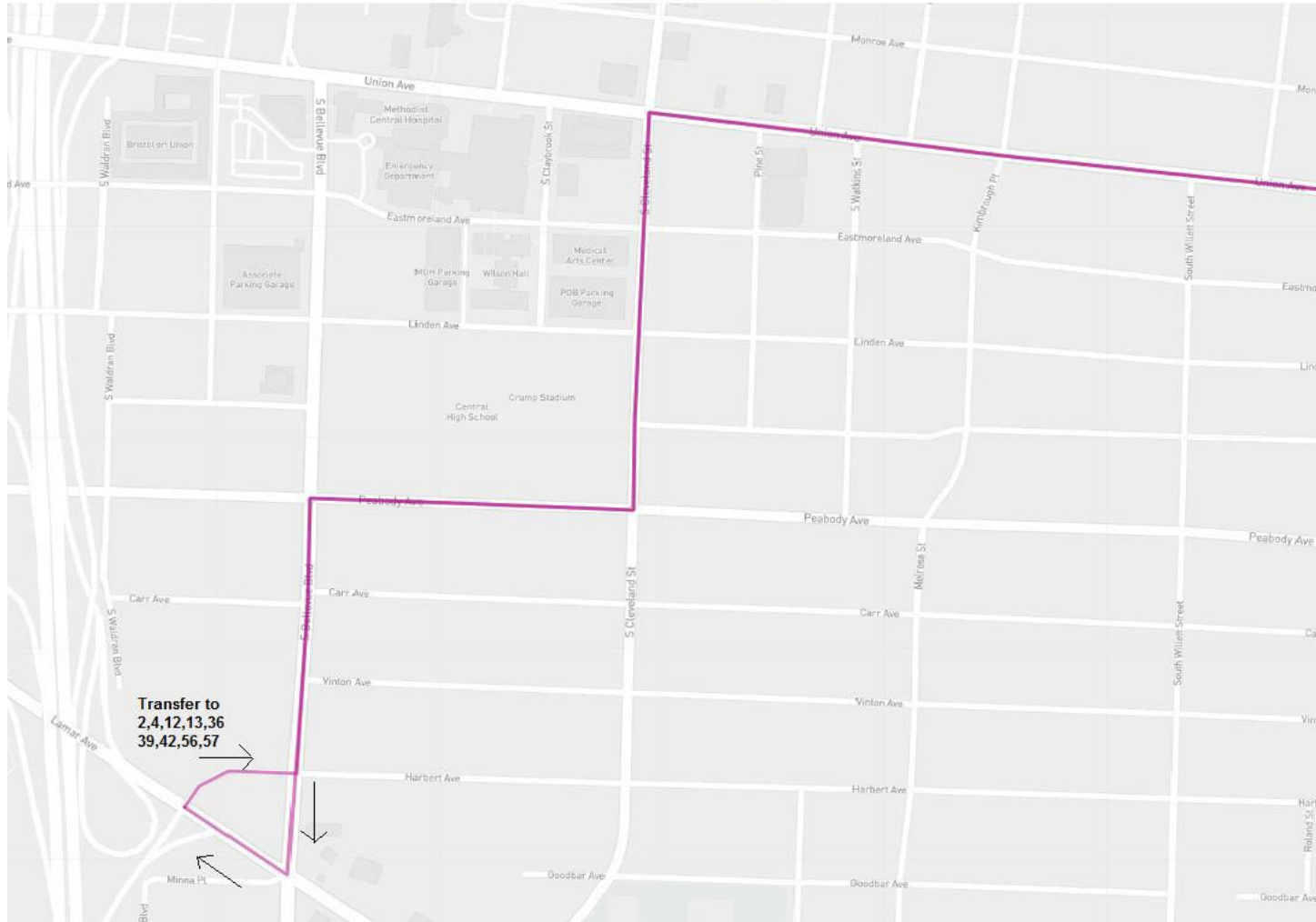
Route 19 Inbound

Head west on Vollintine
Left on Watkins
Stop at Watkins and Jackson near side

Connecting routes: 42,50,52,53

St. Jude Marathon Detour

Route 34 Detour



Effective: Saturday,
December 2, 2023 at 7:00 AM
to 3:00 PM

Directions:

Route 34 Outbound

Start at Harbert and Bellevue

Left on Bellevue

Right on Peabody

Left on Cleveland

Right on Union

Continue regular route

Route 34 Inbound

Head west on Union

Left on Cleveland

Right on Peabody

Left on Bellevue

Right on Lamar

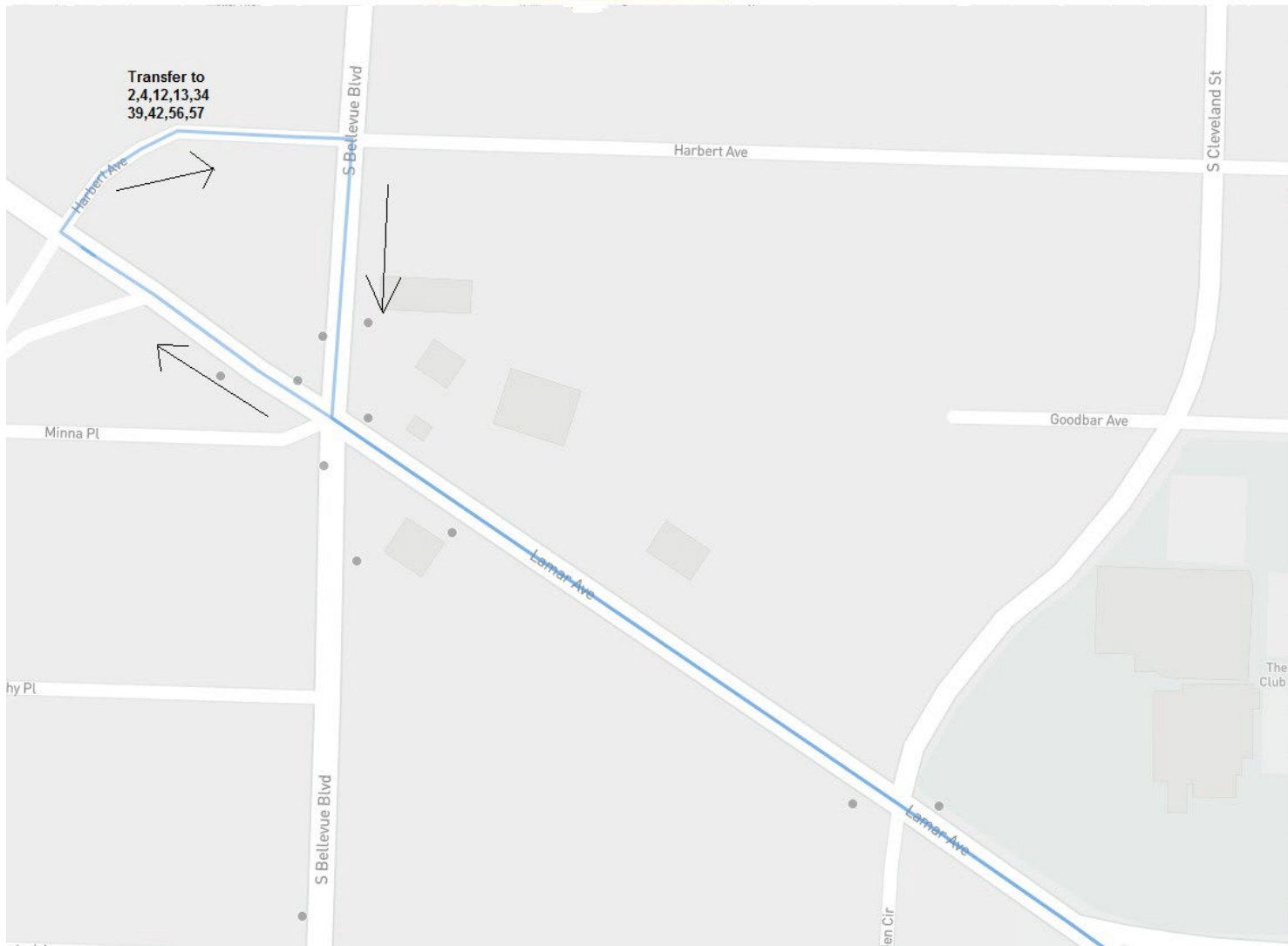
Right on Harbert

Connecting routes:

2,4,12,13,36,39,42,56,57

St. Jude Marathon Detour

Route 36 Detour



Effective: Saturday, December 2,
2023 at 7:00 AM to 3:00 PM

Directions:

Route 36 Outbound

Start at Harbert and Bellevue Right
on Bellevue
Left on Lamar
Continue regular route

Route 36 Inbound

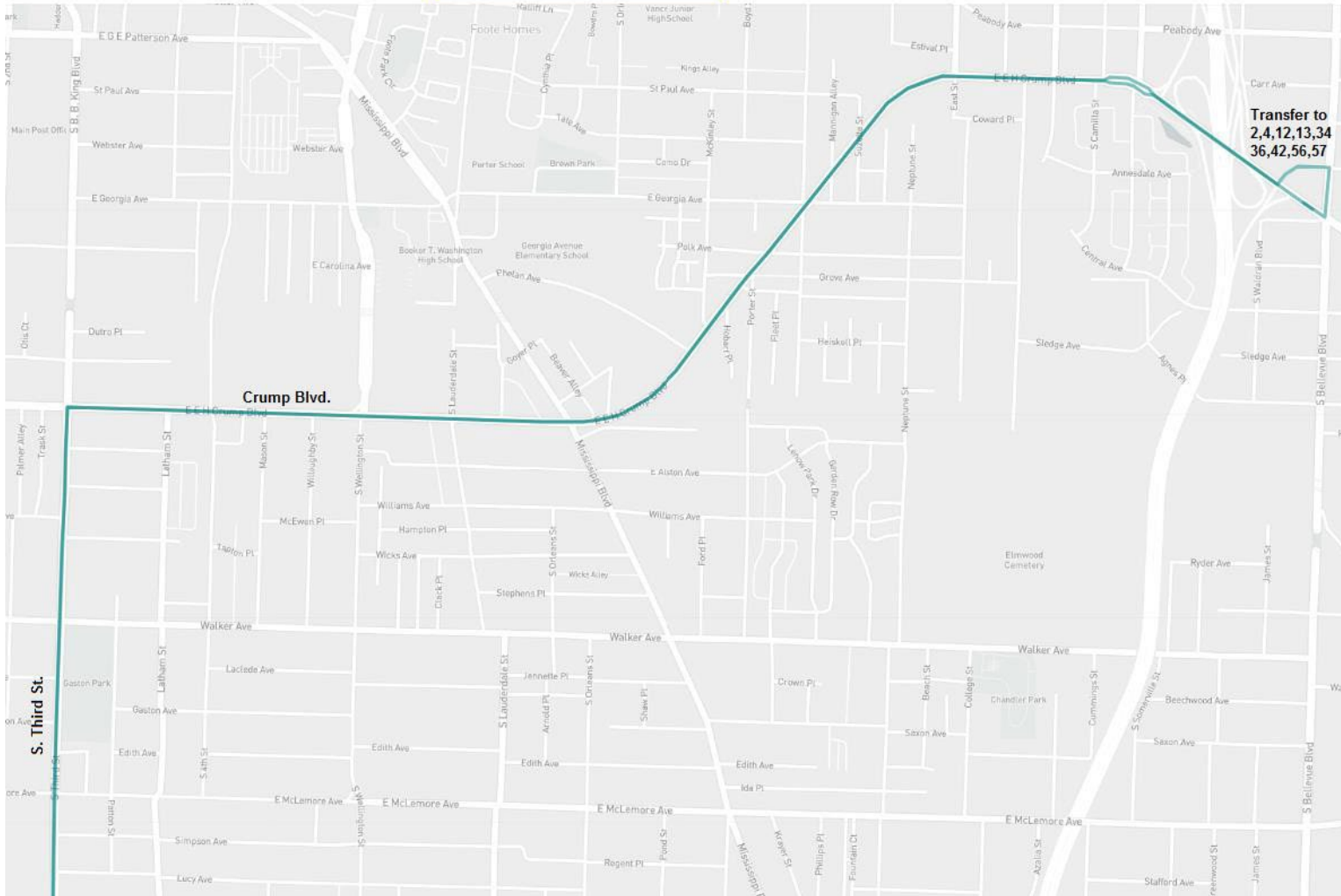
Head west on Lamar
Right on Harbert

Connecting routes:

2,4,12,13,34,39,42,56,57

St. Jude Marathon Detour

Route 39 Detour



Effective: Saturday, December 2, 2023
at 7:00 AM to 3:00 PM

Directions:

Route 39 Outbound

Start at Harbert and Bellevue

Right on Bellevue

Right on Lamar which becomes Crump

Left on S. Third

Continue regular route

Route 39 Inbound

Head north on S. Third

Right on Crump which becomes Lamar

Left on Harbert

Connecting routes:

2,4,12,13,34,36,42,56,57

St. Jude Marathon Detour

Route 40 Detour



Effective: Saturday, December 2, 2023
at 7:00 AM to 3:00 PM

Directions:

Route 40 Outbound

Starting from Chelsea and Thomas Right on Firestone
Right on Breedlove right on Chelsea,
Right Thomas, Right on Stage
Continue regular route

Route 40 Inbound

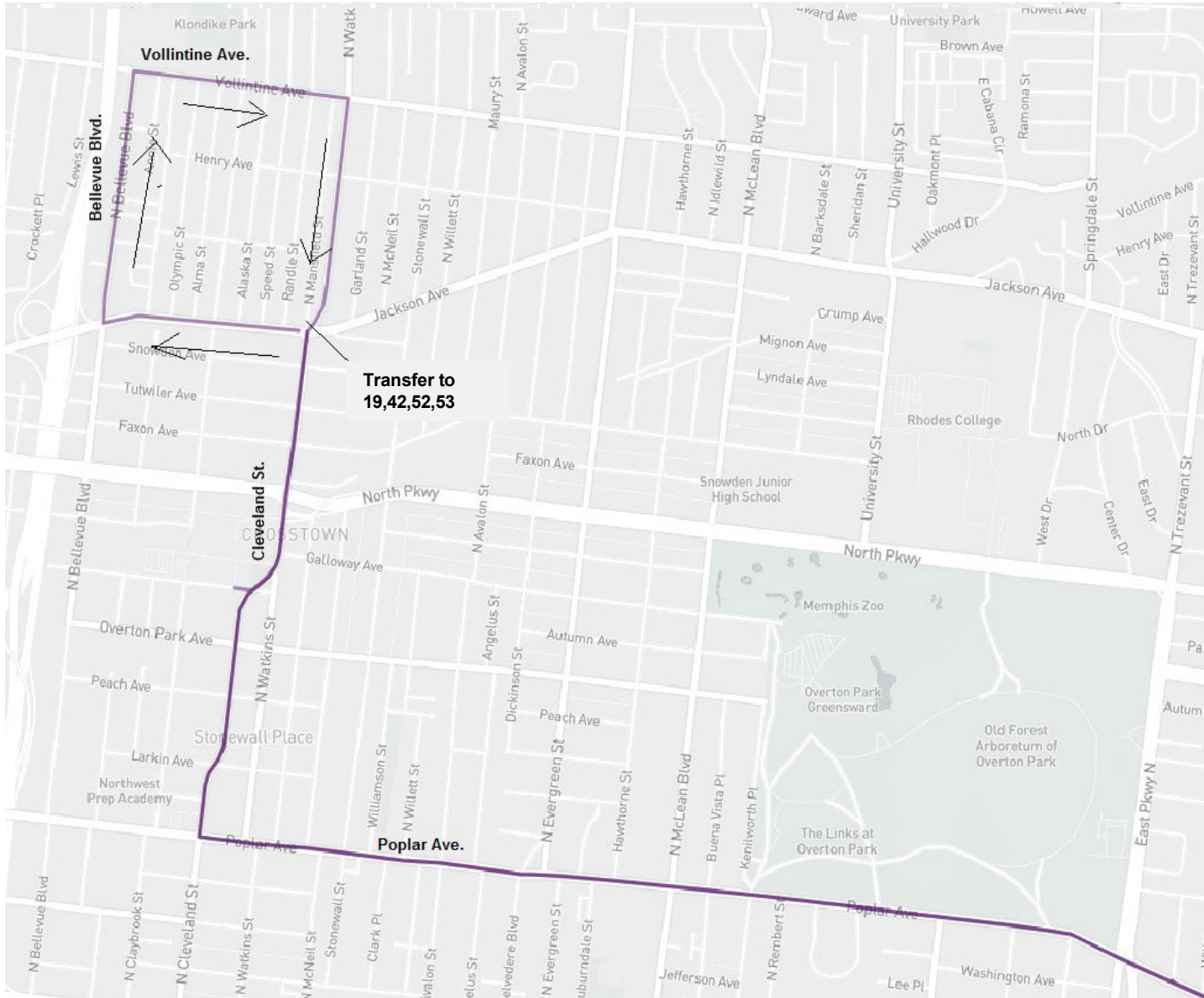
From Stage and Thomas, Right on Thomas, Left on Firestone, Right Breedlove, Right Chelsea, Right on Thomas, Change to Line 13, Right on Firestone, Right on Breedlove, Left Chelsea, Right I-240 south, Exit Lamar/Crump Left on Lamar, Left on Harbert, /right Bellevue

Connecting routes:

2,4,12,13,34,36,42,56,57

St. Jude Marathon Detour

Route 50 Detour



Effective: Saturday, December 2, 2023 at
7:00 AM to 3:00 PM

Directions:

Route 50 Outbound

Start at Watkins and Jackson
Head south on Watkins which
becomes Cleveland
Left on Poplar
Continue regular route

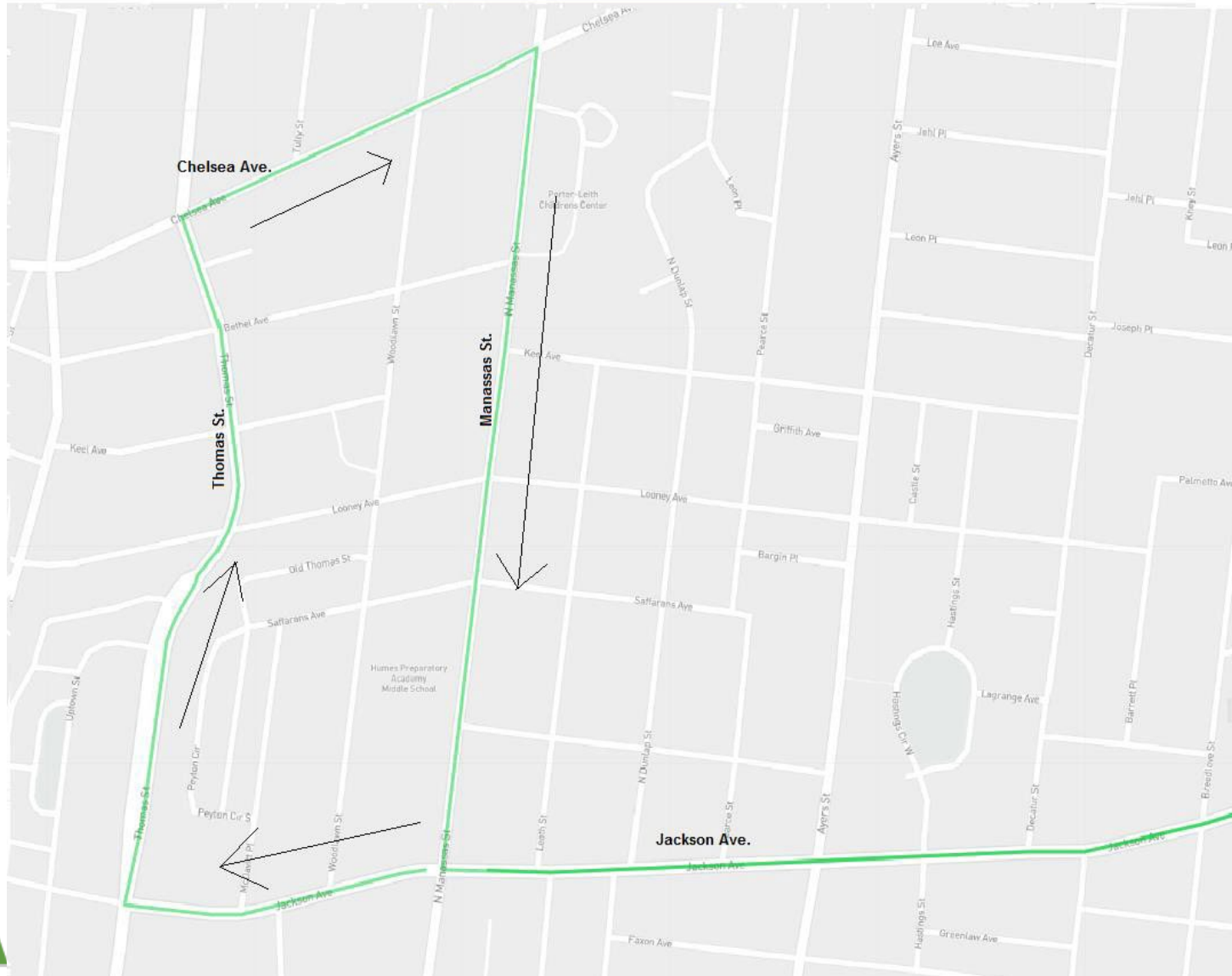
Route 50 Inbound

Head west on Poplar
Right on Cleveland which becomes
Watkins
Left on Jackson
Right on Bellevue
Right on Vollintine
Right on Watkins
Stop at Watkins and Jackson near side

Connecting routes: 19,42,52,53

St. Jude Marathon Detour

Route 52 Detour



Effective: Saturday, December 2, 2023
at 7:00 AM to 3:00 PM

Directions:

Route 52 Outbound

Start at Manassas and Jackson
Left on Jackson
Continue regular route

Route 52 Inbound

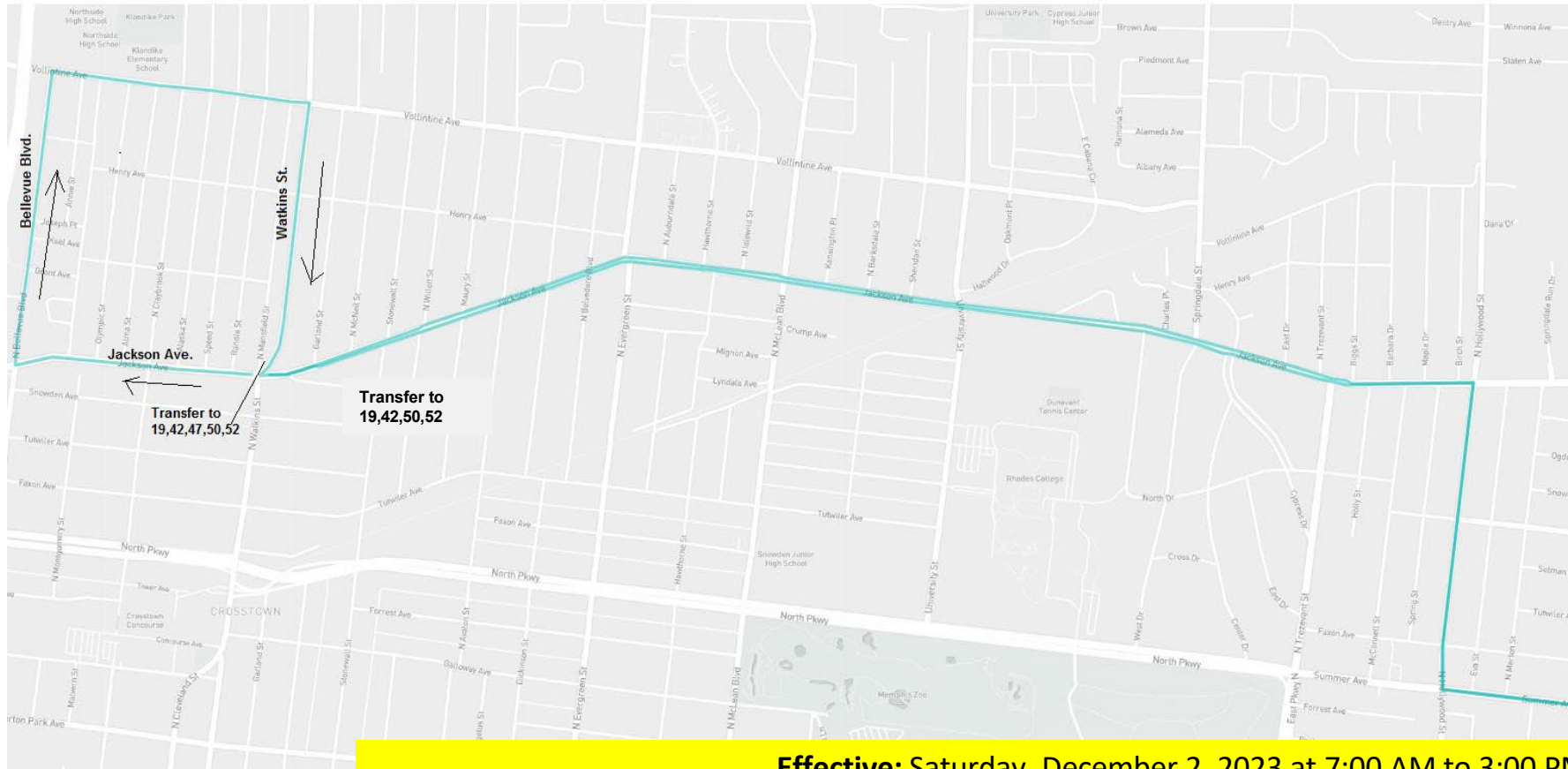
Head west on Jackson
Right on Thomas
Right on Chelsea
Right on Manassas
Stop at Manassas and Jackson near
side

Connecting routes:

19,42,50,53 (at Jackson and Watkins)

St. Jude Marathon Detour

Route 53 Detour



Effective: Saturday, December 2, 2023 at 7:00 AM to 3:00 PM

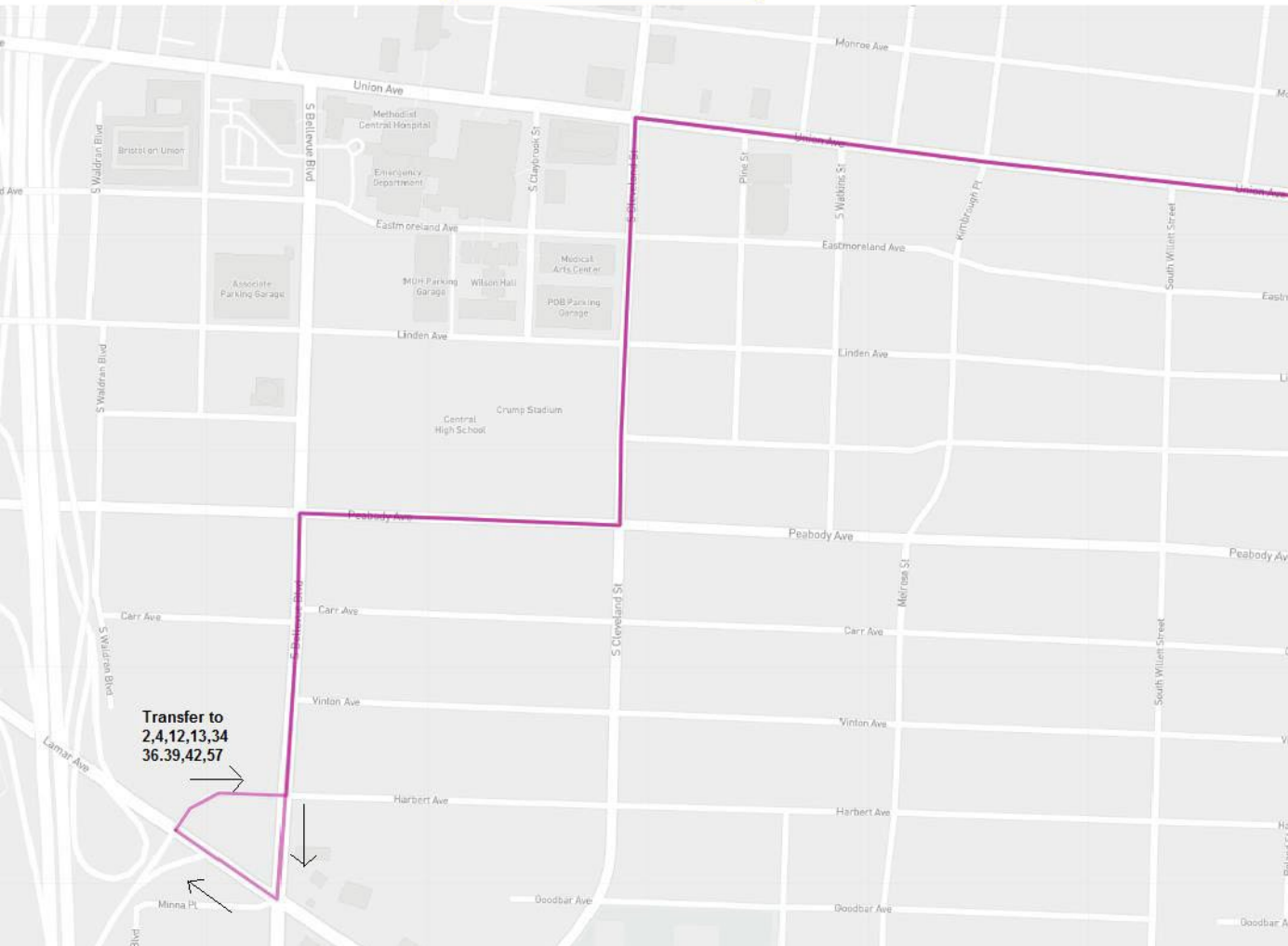
Directions: Route 53 Outbound: Start at Watkins and Jackson, Left on Jackson, Right on Hollywood, Left on Summer, Continue regular route

Route 53 Inbound: Head west on Summer, Right on Hollywood, Left on Jackson, Right on Bellevue, Right on Vollintine, Right on Watkins, Stop at Watkins and Jackson Near Side

Connecting routes: 2,4,12,13,34,36,39,42,56,57

St. Jude Marathon Detour

Route 56 Detour



Transfer to
2,4,12,13,34
36,39,42,57

Effective: Saturday,
December 2, 2023 at 7:00 AM
to 3:00 PM

Directions:

Route 56 Outbound

Start at Harbert and Bellevue
Left on Bellevue
Right on Peabody
Left on Cleveland
Right on Union
Continue regular route

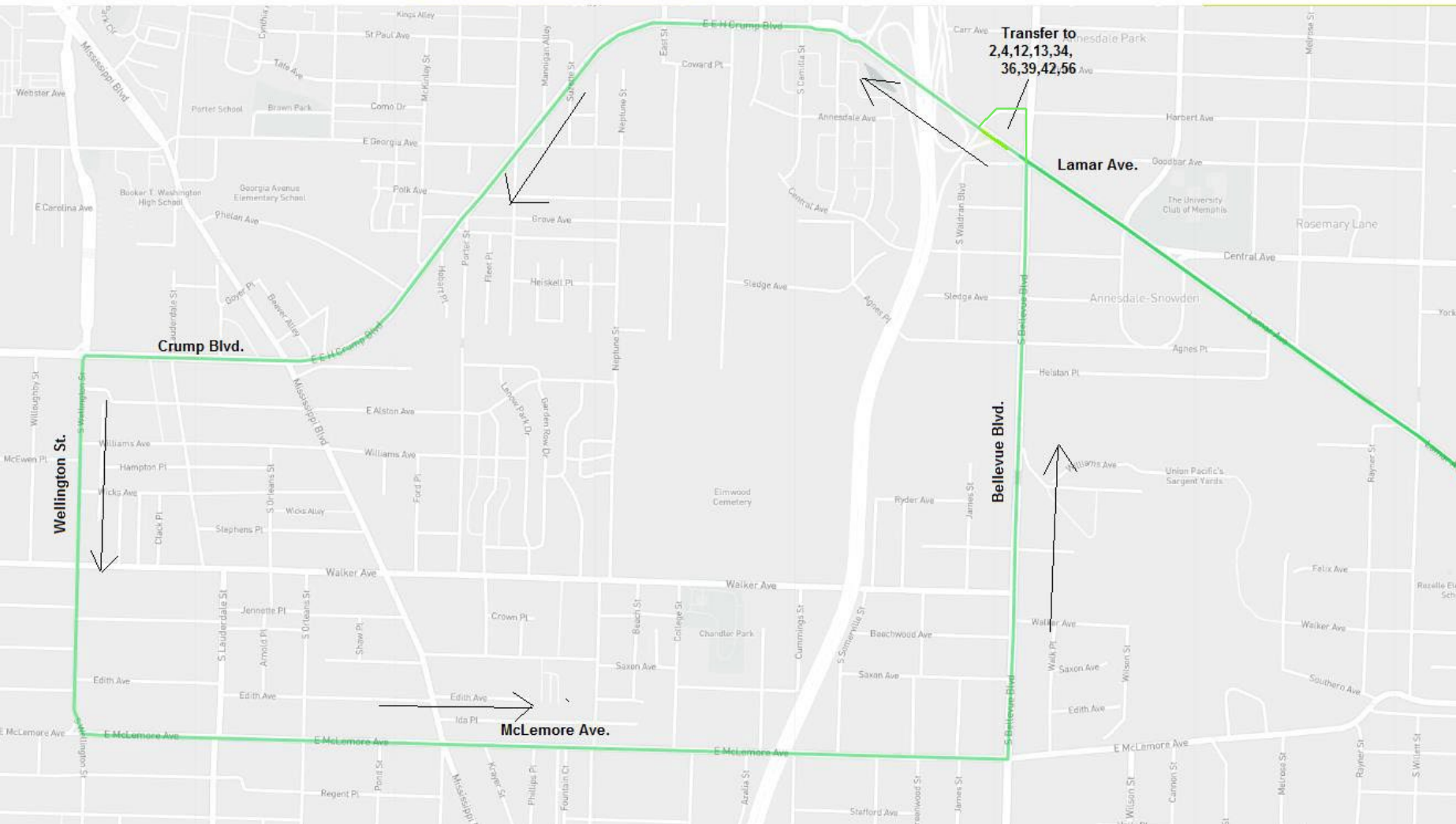
Route 56 Inbound

Head west on Union
Left on Cleveland
Right on Peabody
Left on Bellevue
Right on Lamar
Right on Harbert

Connecting routes:
2,4,12,13,34,36,39,42,57

St. Jude Marathon Detour

Route 57 Detour



Effective: Saturday, December 2, 2023
at 7:00 AM to 3:00 PM

Directions:

Route 57 Outbound

Start at Harbert and Bellevue
Right on Bellevue
Right on Lamar which becomes Crump
Left on Wellington
Continue regular route

Route 57 Inbound

Head west on Lamar
Right on Harbert

Connecting routes:

2,4,12,13,34,36,39,42,56